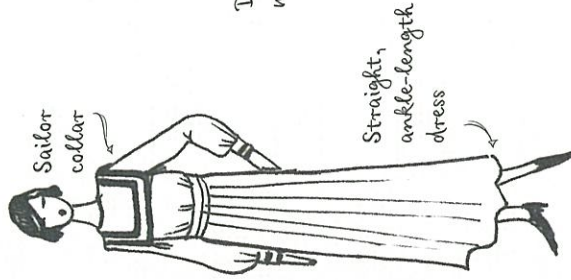


Style revival

Fashion changes every season. But now there's a new trend for vintage clothing - anything between 25 and 100 years old. This timeline shows some of the key looks through the decades.

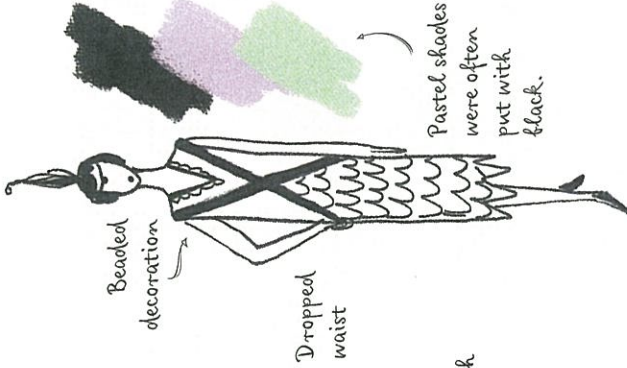
1910s

First World War (1914-18)



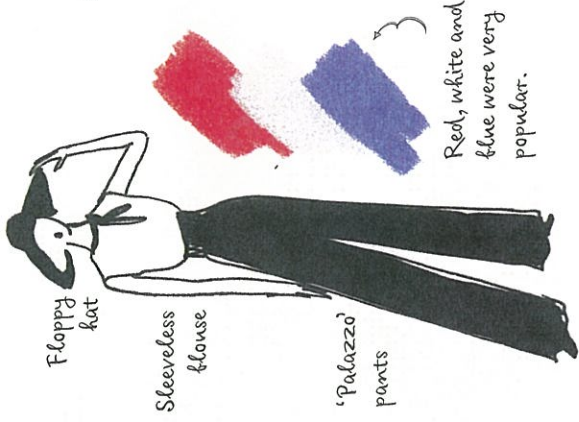
Practical clothes for wartime

1920s



Shorter, boxy dress shapes

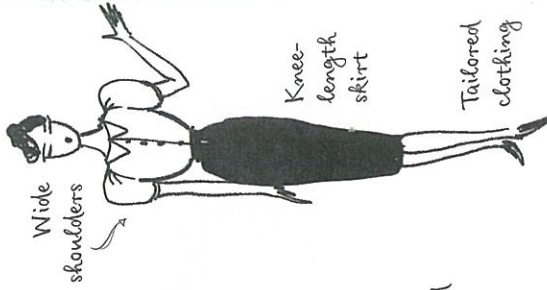
1930s



Long, lean silhouettes

1940s

Second World War (1939-45)



Styles limited by wartime fabric shortages

Nautical fashions based on sailors' clothing, with naval motifs in red, white and blue, have come around again and again in the last 100 years.



Bright fabrics printed with so-called 'psychedelic' swirls and spiral patterns were popular in the 1960s and 70s, often in citrus shades, bright pinks and purples.



1950s



Rounded shoulders

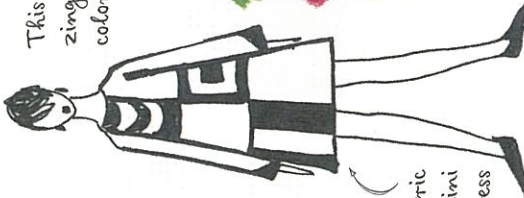
Cinched-in waist

Full skirt



Fresh pastels or strong, bright shades

1960s



Geometric print mini dress

This trend used zingy blocks of color.



1970s

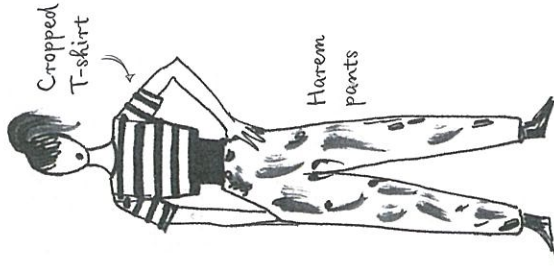


A-line maxi skirt



Mustard yellow, orange and brown

1980s



Cropped T-shirt

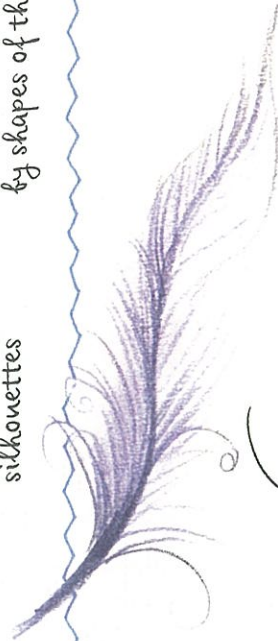
Harem pants

Feminine 'hourglass' silhouettes

Short dresses influenced by shapes of the 1920s

Loose, flowing clothes and bold prints

Anything goes - from sportswear to suits

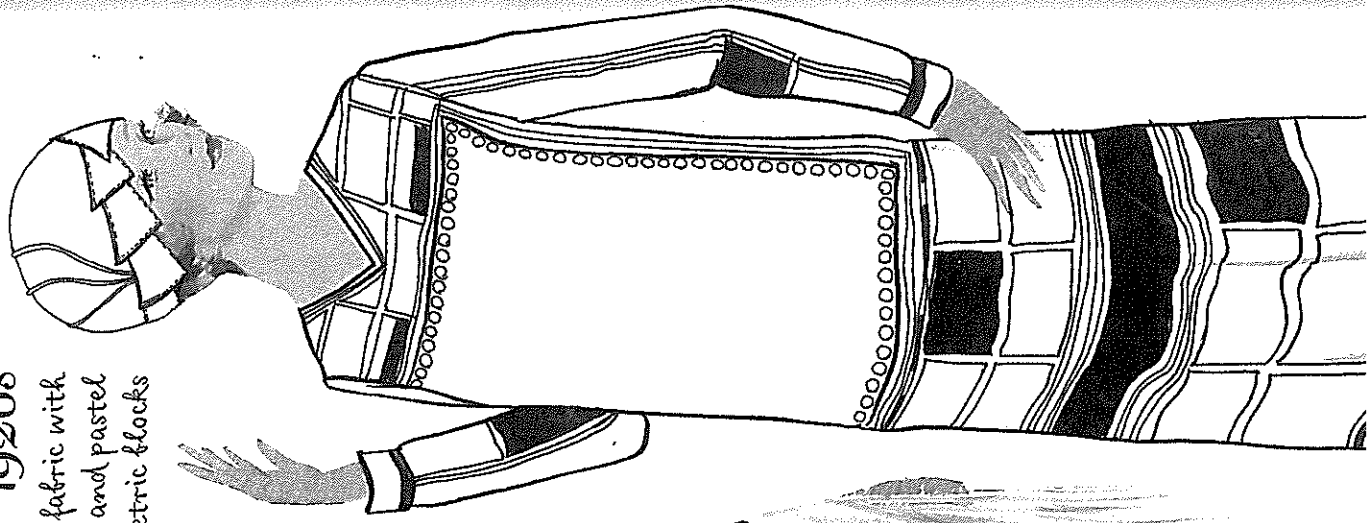


In the 1920s and 1960s, fashion designers were inspired

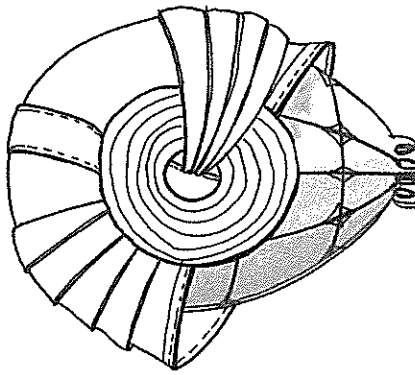
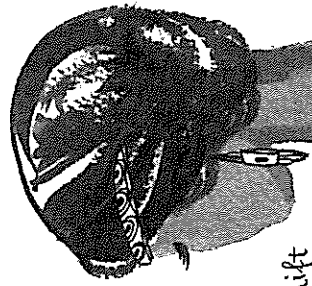
Geometric prints

1920s

Dress fabric with black and pastel geometric blocks

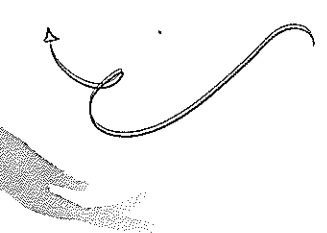
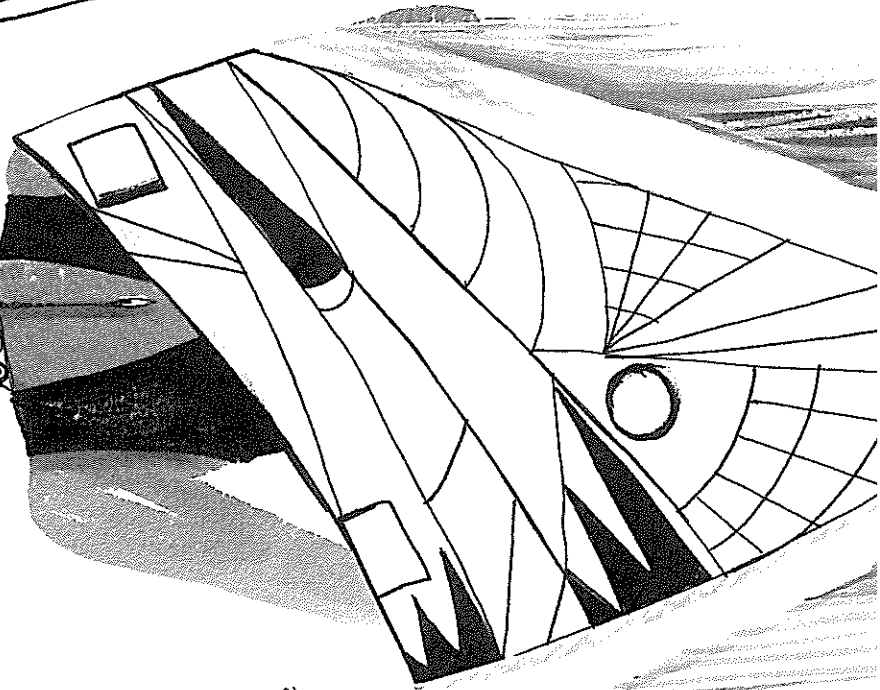


Straight shift dress



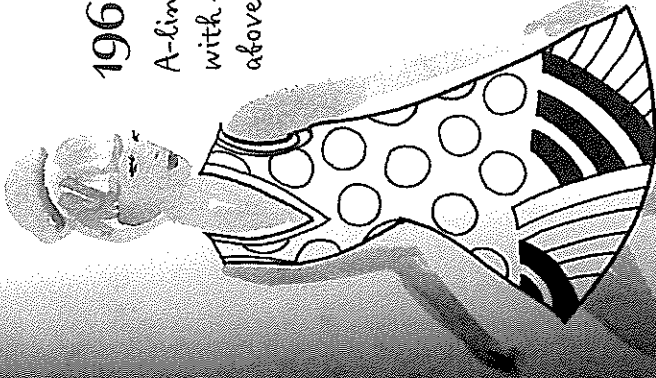
1920s

Bell-shaped cloche hat (cloche is French for 'bell')

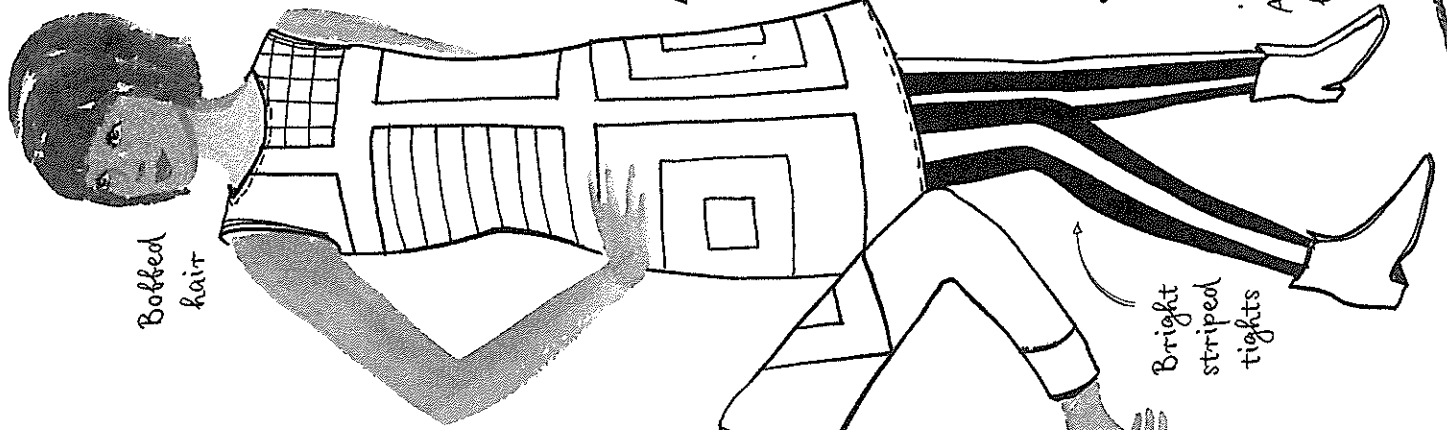


1960s

A-line mini dress with hemline well above the knees



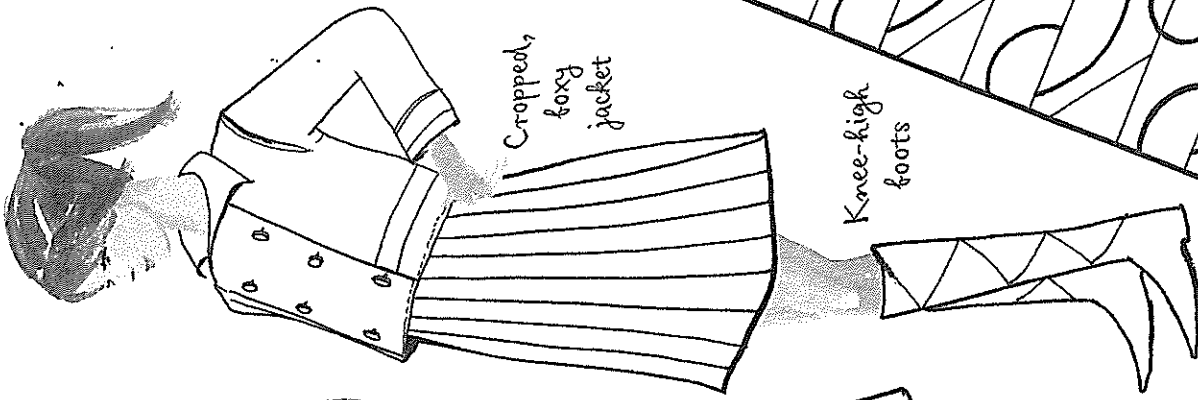
Bobbed hair



Knee-high boots

Ankle boots

Cropped, boxy jacket

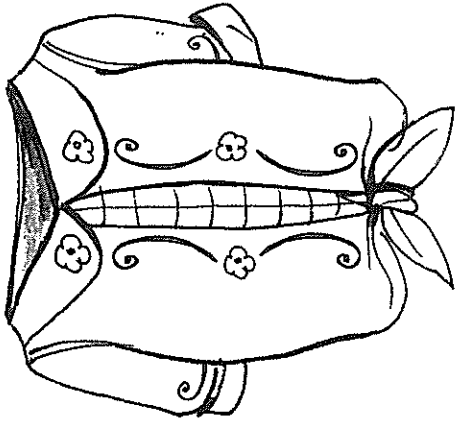


Bright striped tights

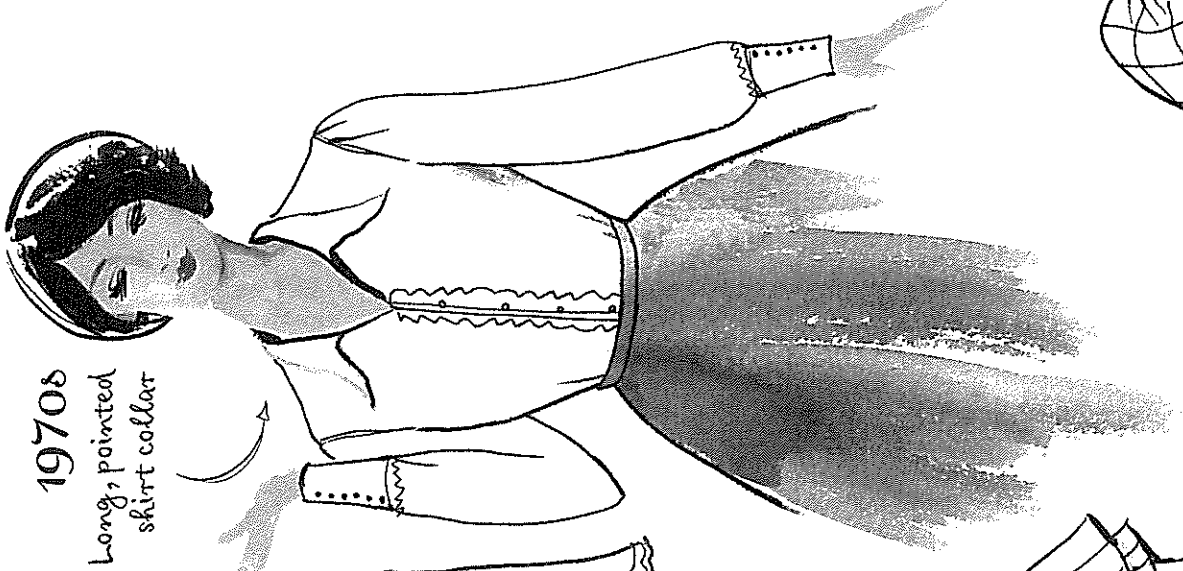
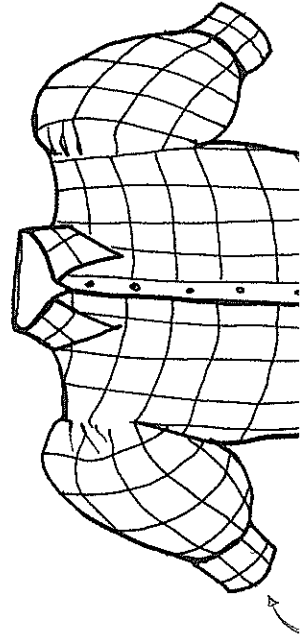
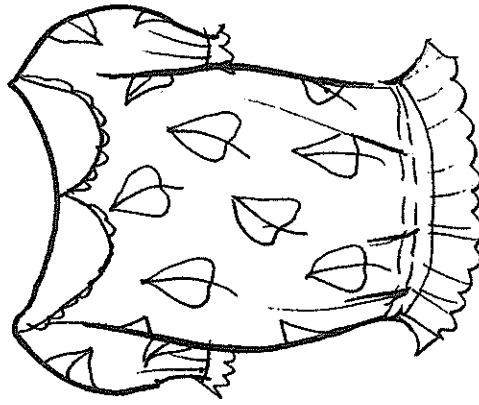


Black, white and primary color blocks

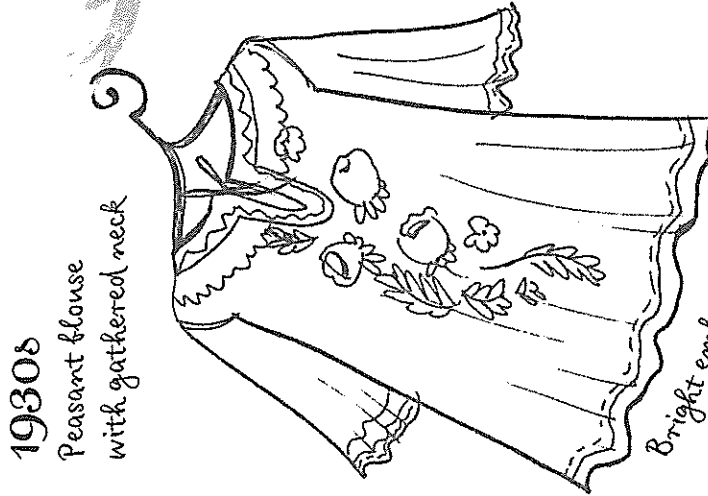
Shirts and tops



1920s
Blouses with rounded
'Peter Pan' collars

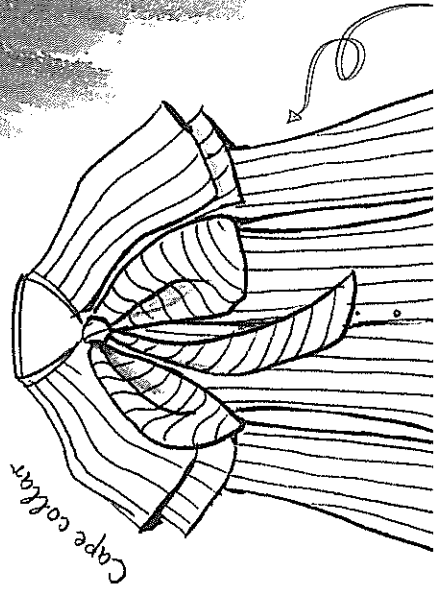


1970s
Long, pointed
shirt collar



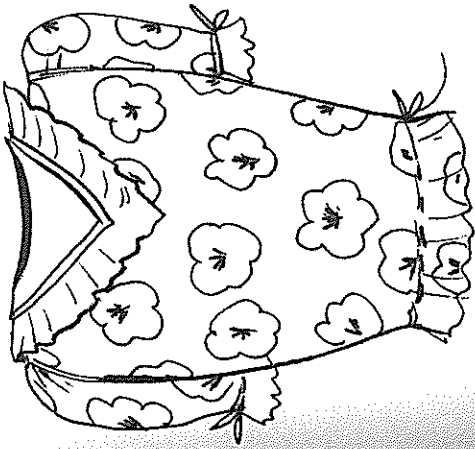
1930s
Peasant blouse
with gathered neck

Bright embroidered flowers



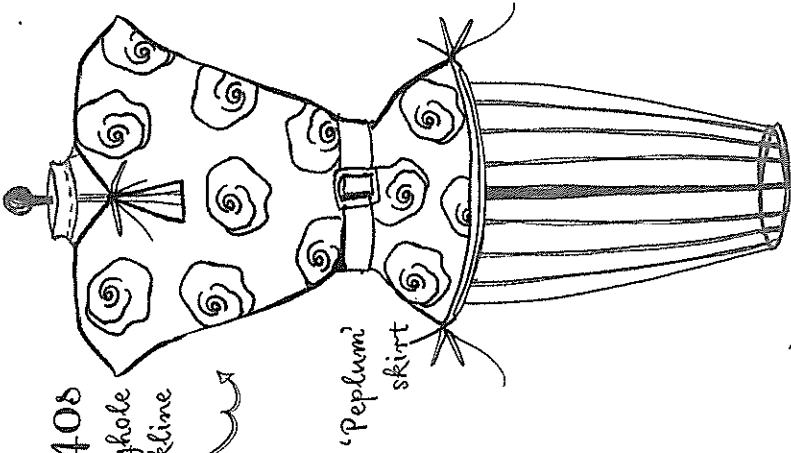
Cape collar

1930s Frilled v-neck



1940s

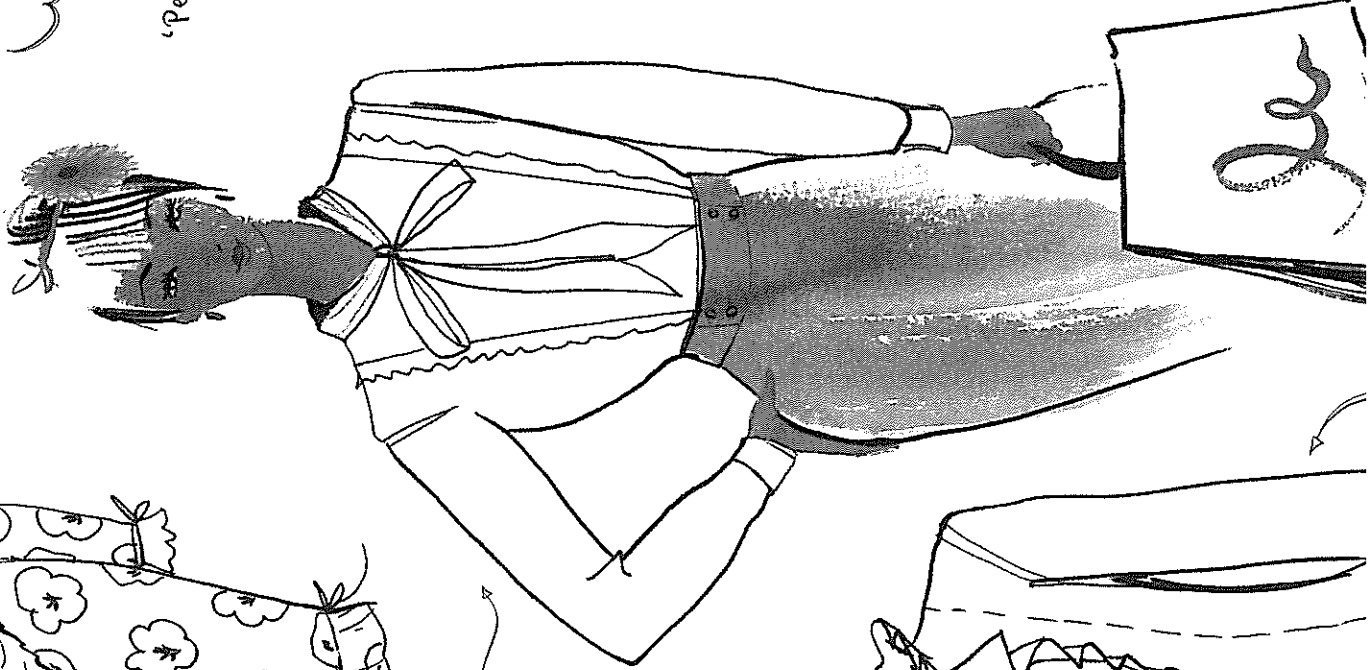
Keyhole neckline



'Peplum' skirt

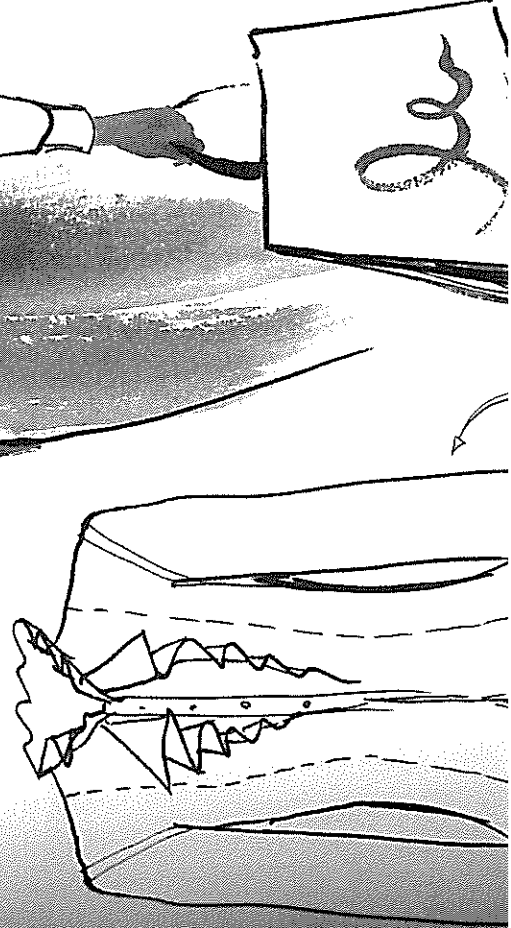
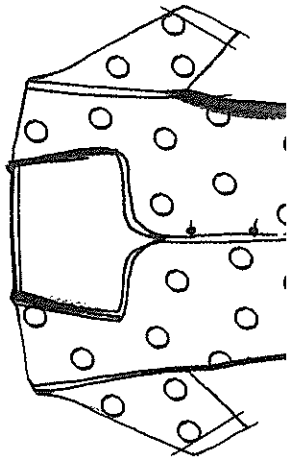
1960s

Secretary blouse with low collar



1980s

Sweetheart neckline



Psychedellic swirls

Late 1960s

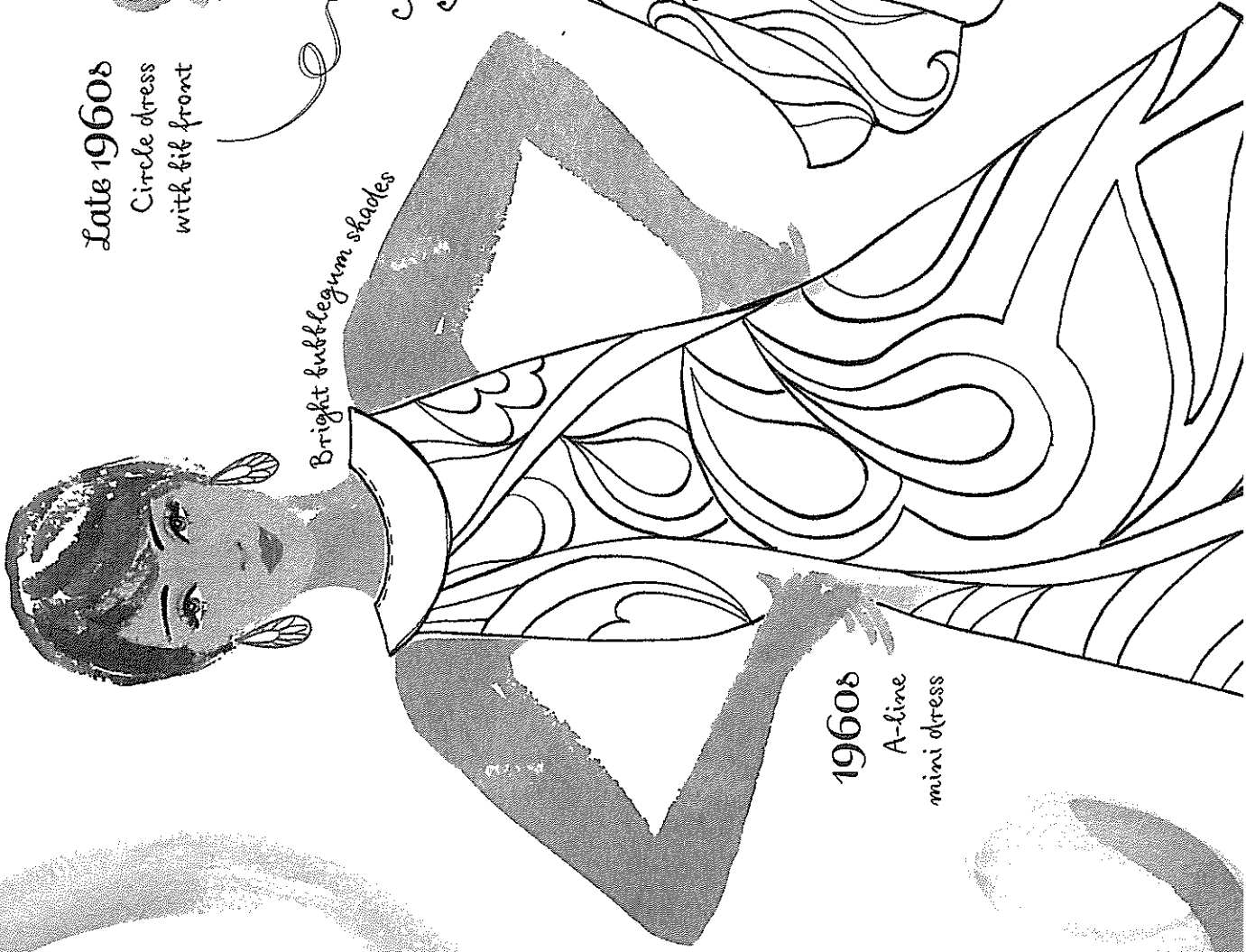
Circle dress
with fit front



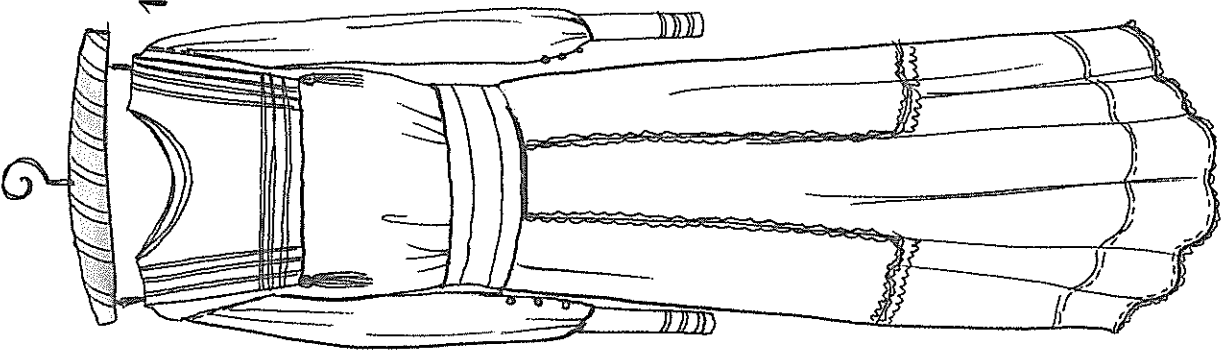
Bright bubblegum shades

1960s

A-line
mini dress

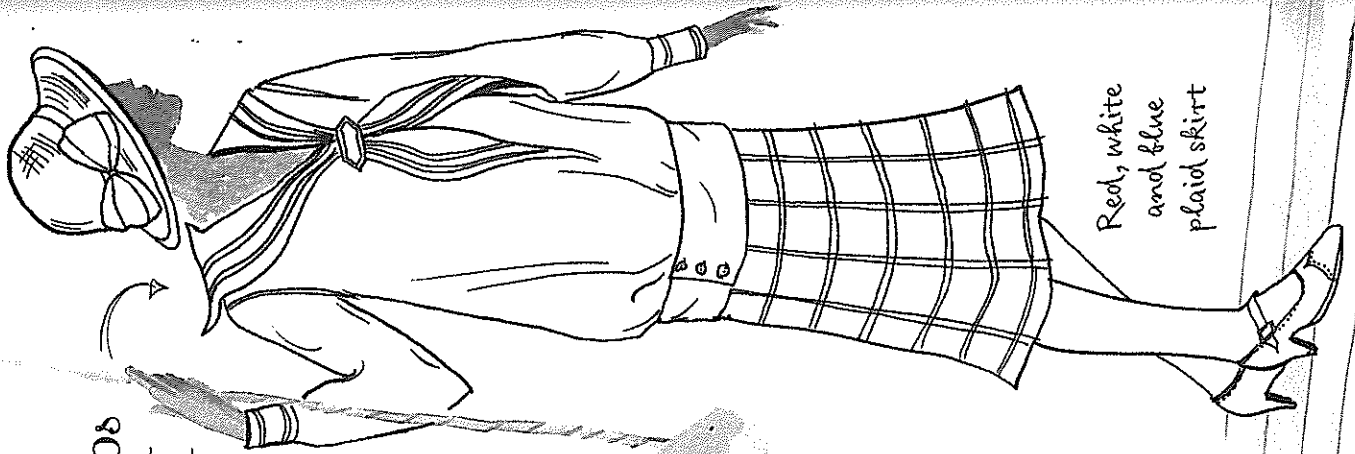
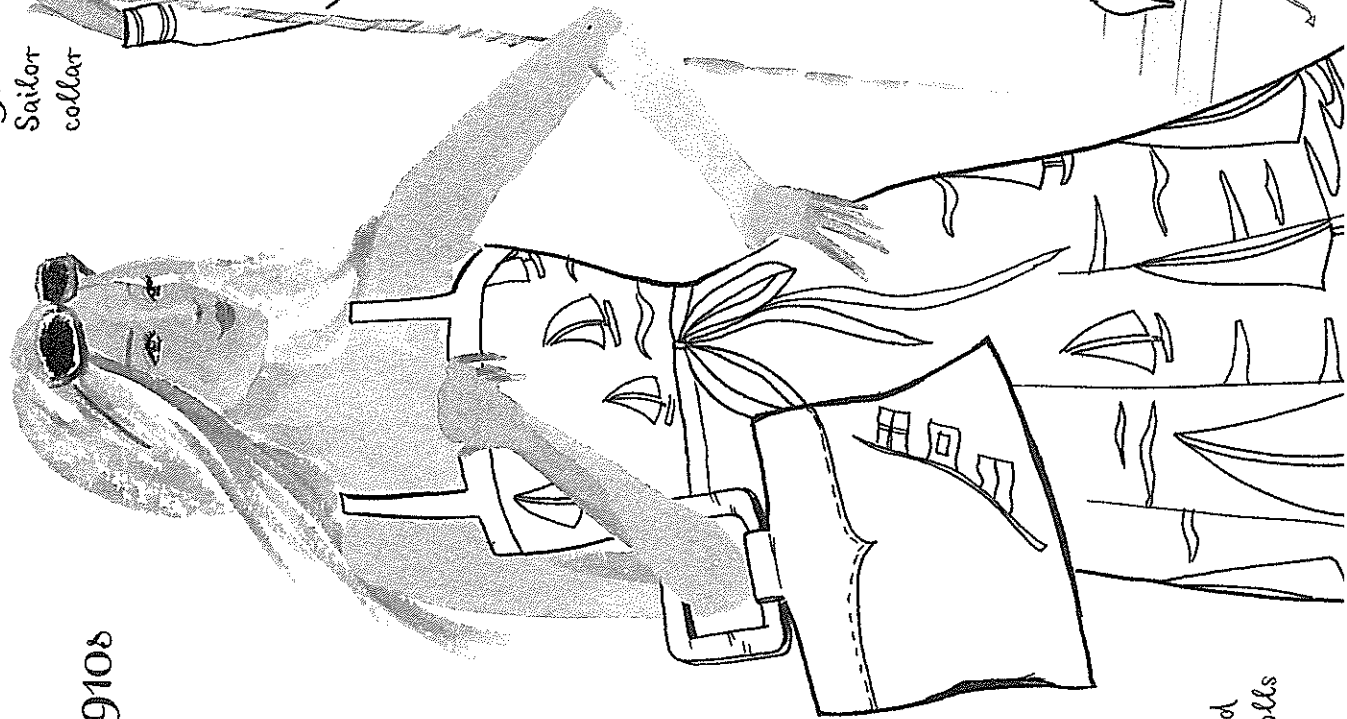


Nautical fashion



1910s

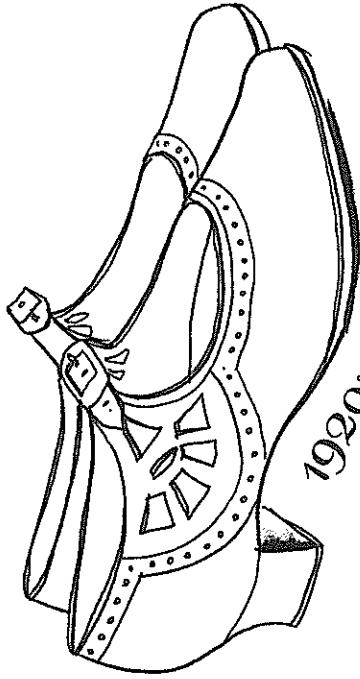
Striped
plimsolls



1920s
Sailor
collar

Red, white
and blue
plaid skirt

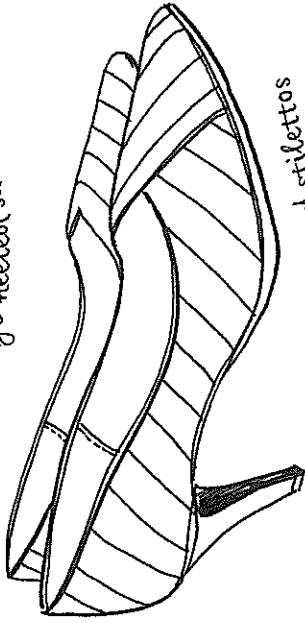
Shoes and boots



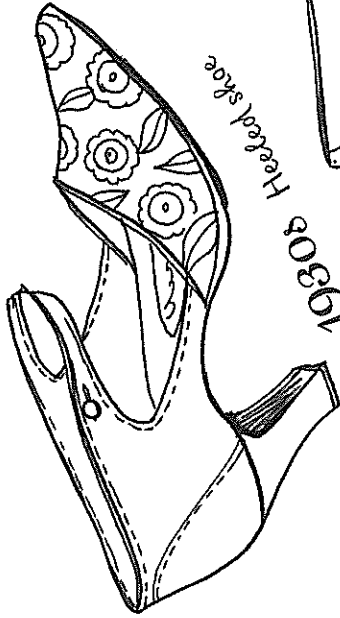
1920s Dancing shoes



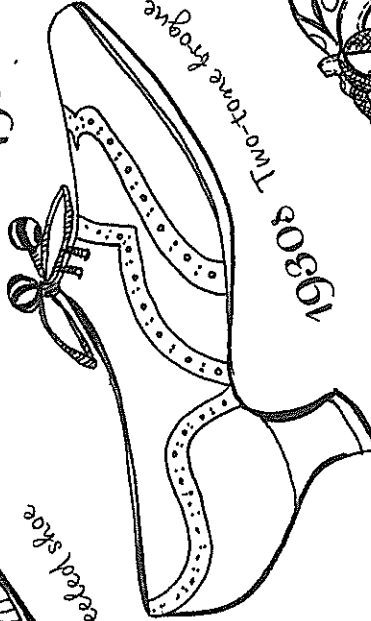
1940s Wedge-heeled sandals



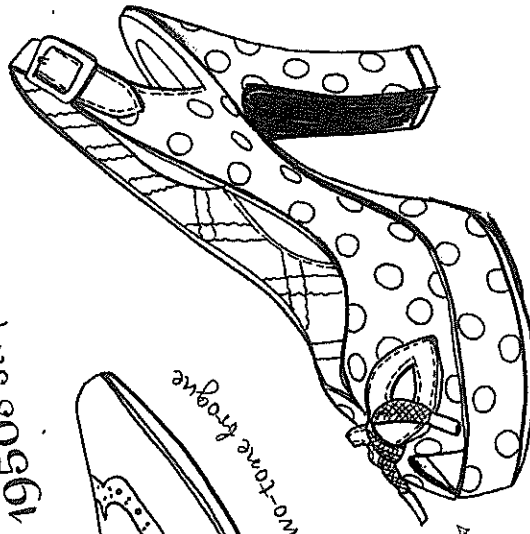
1950s Striped peep-toe shoes



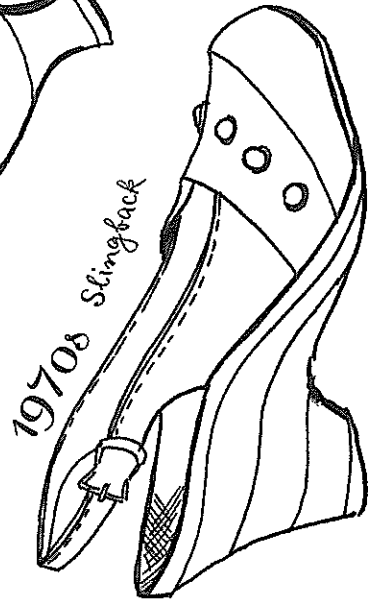
1930s Heeled shoe



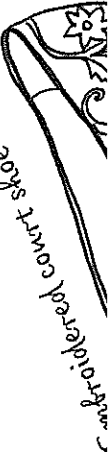
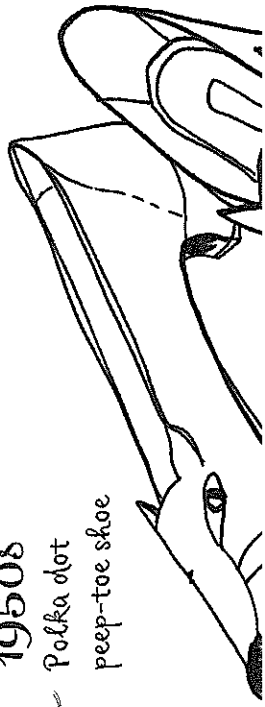
1930s Two-tone brogue



1950s Polka dot peep-toe shoe

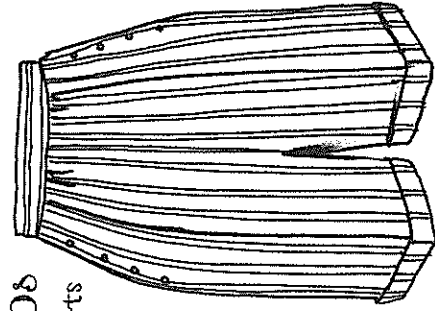
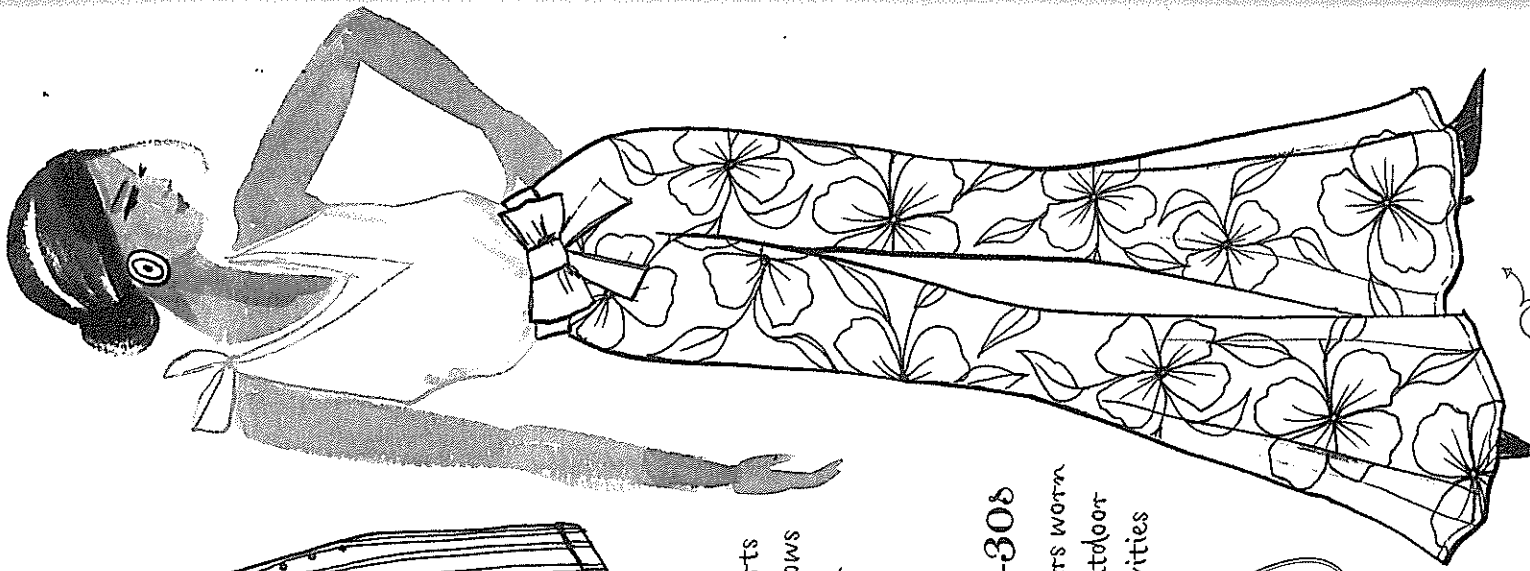


1970s Slingback

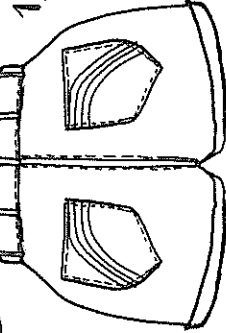


High-heeled court shoe

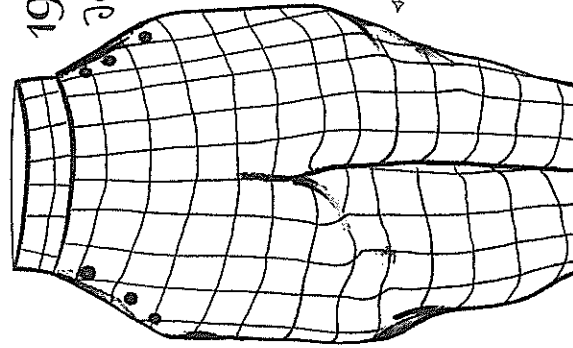
Pants



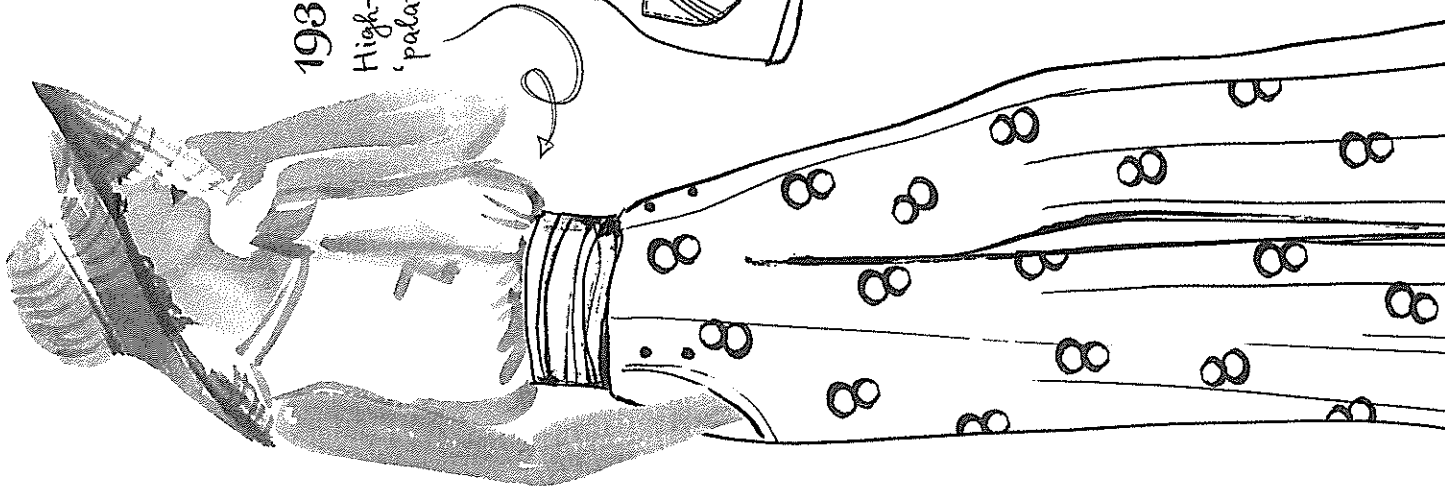
1940s
Cuffed shorts



1970s
Denim shorts
with rainbows
on the back
pockets

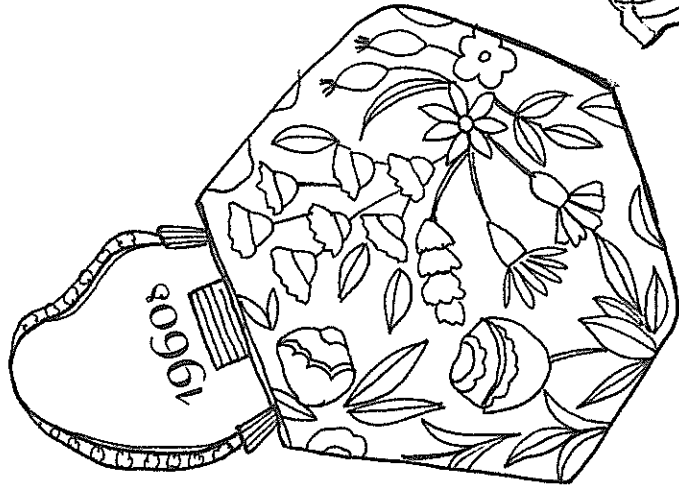


1910s-30s
Jodhpurs worn
for outdoor
activities

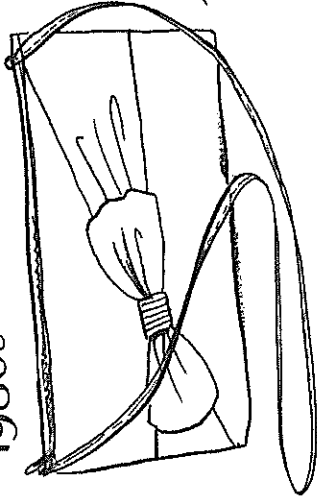


1930s
High-waisted
'palazzo' pants

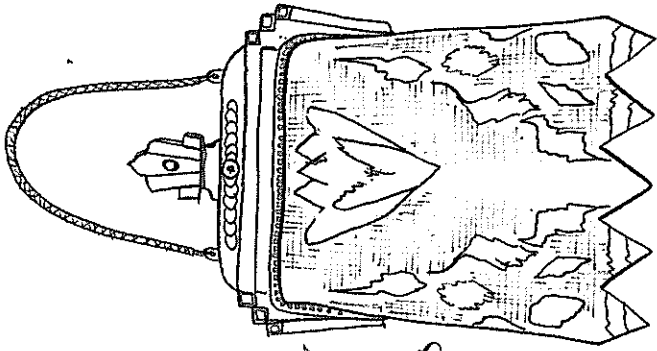
✧ Bags and purses ✧



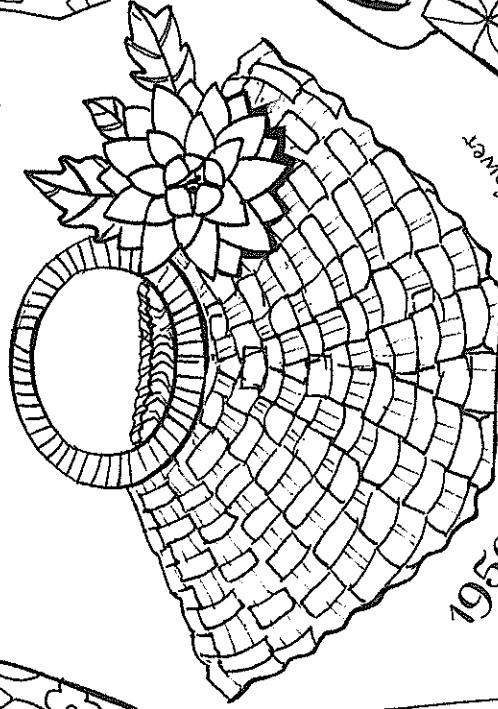
1980s Contrast fow



1920s Beaded purse

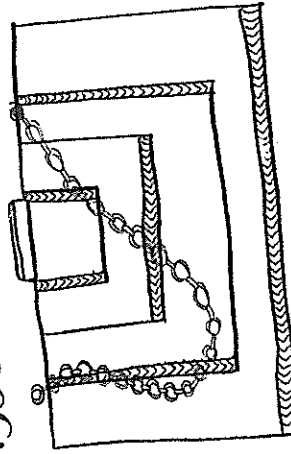


Wooden handles

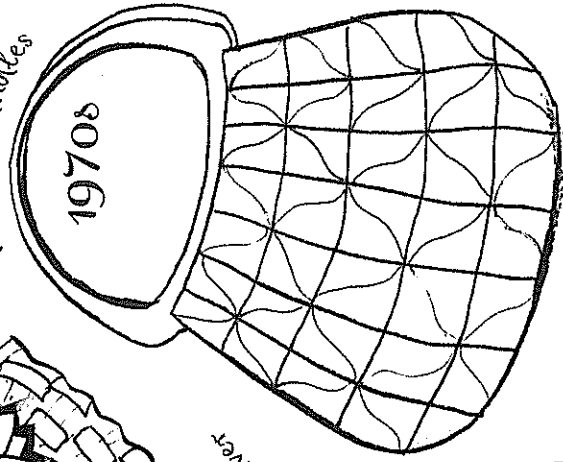
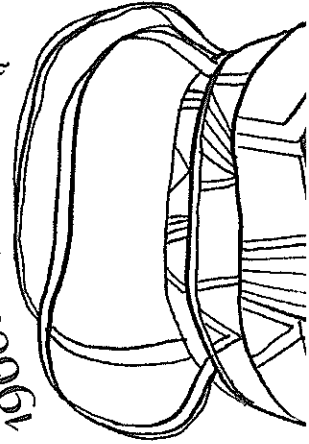


1950s Basket bag with bright flowers

1930s Geometric design

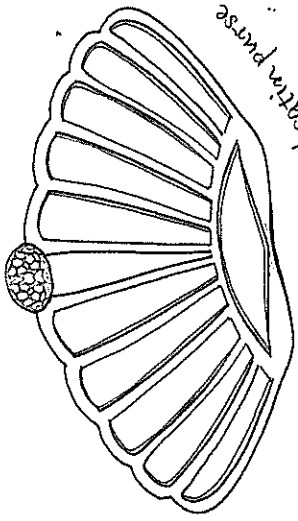


1960s Psychedelic print

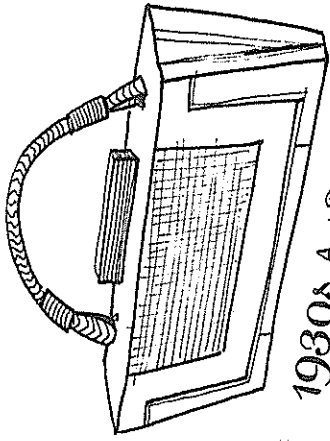


1970s

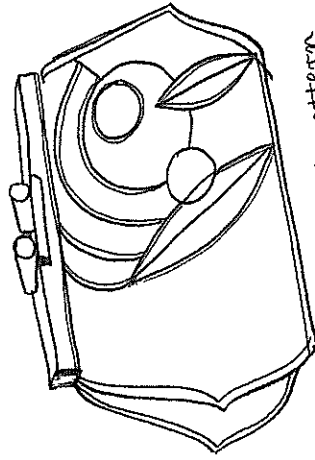




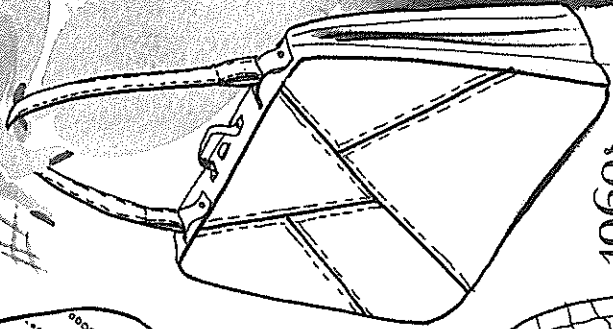
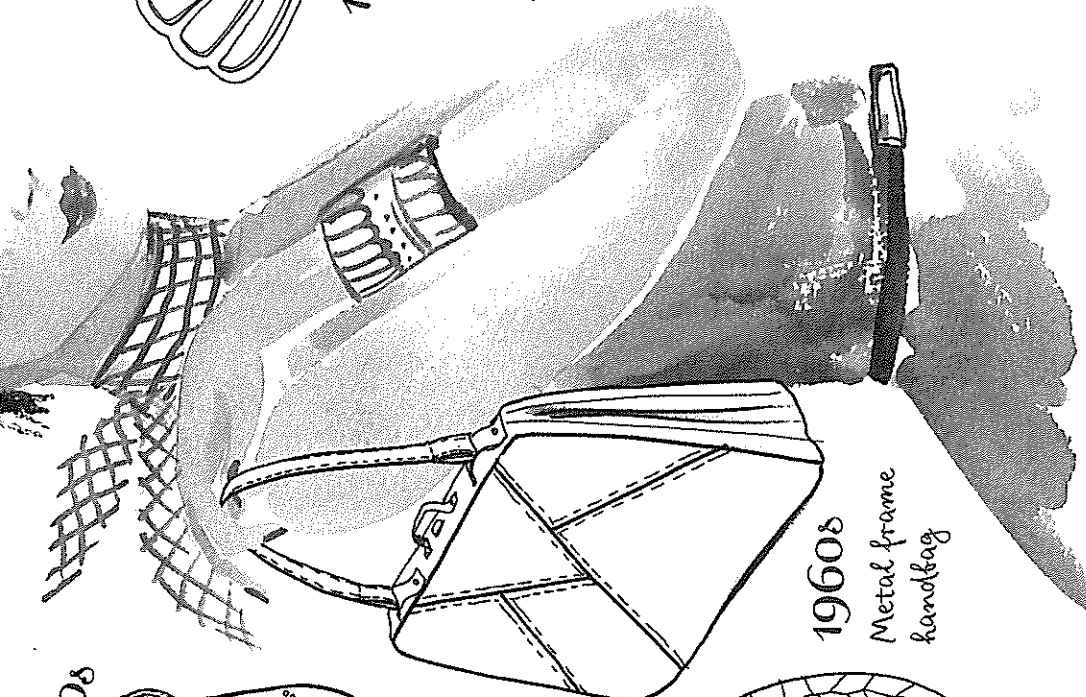
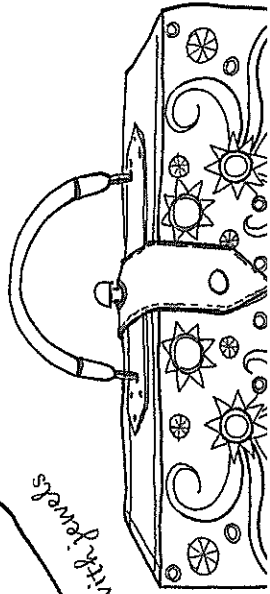
1930s Charm and satin purse



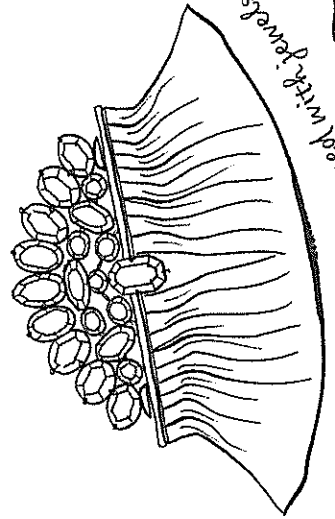
1930s Art Deco clutch



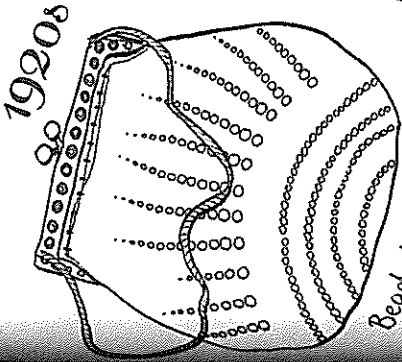
1930s Geometric pattern



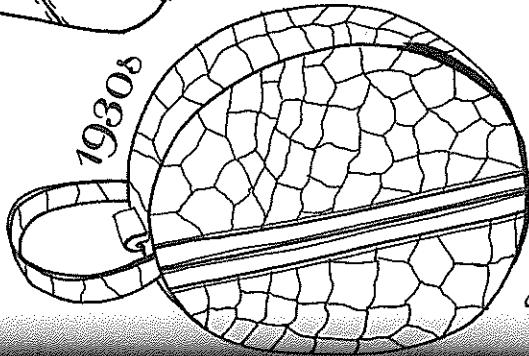
1960s Metal frame handbag



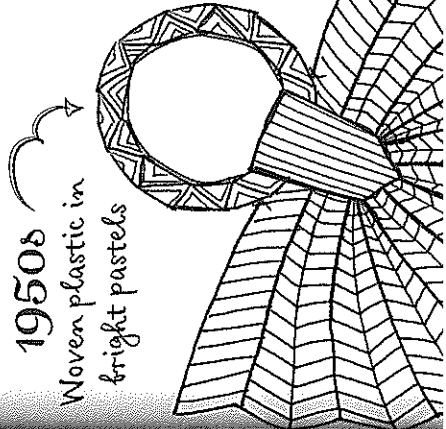
1930s Purse adorned with jewels



1920s Beaded purse



1930s Reptile skin bag

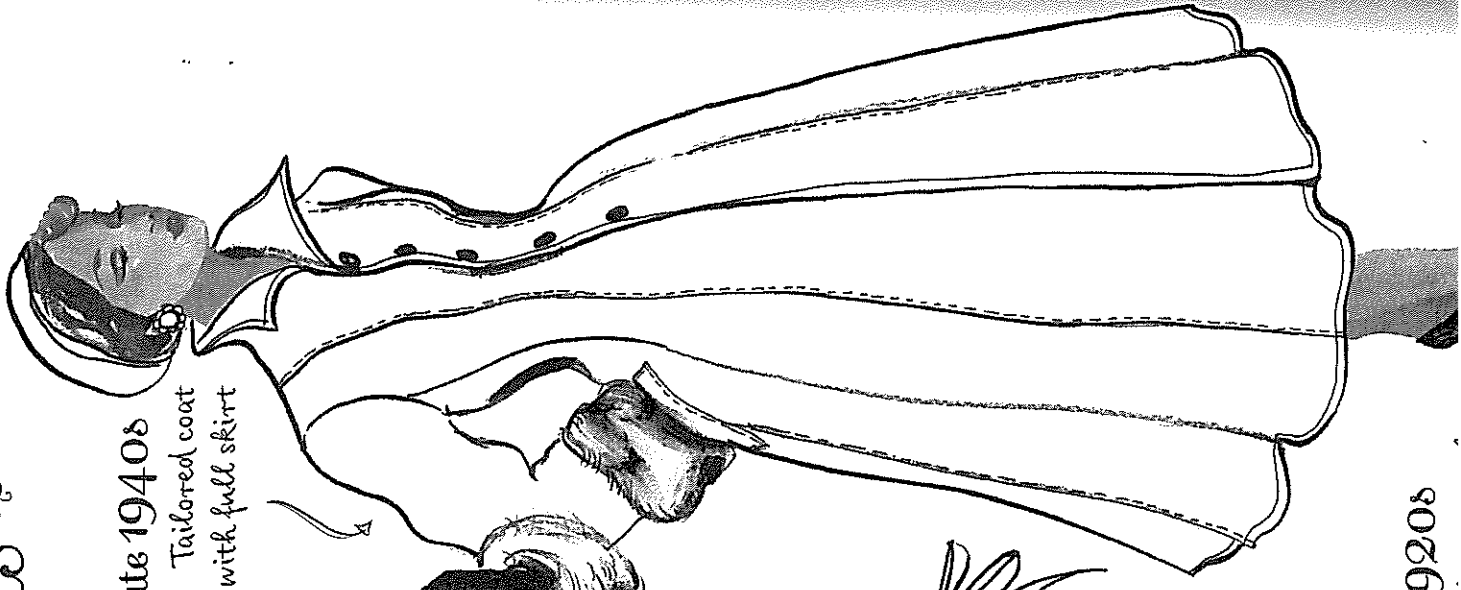


1950s Woven plastic in bright pastels

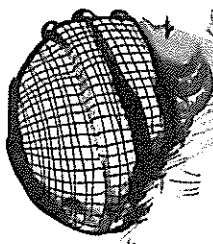
Winter coats

Late 1940s

Tailored coat
with full skirt



1920s

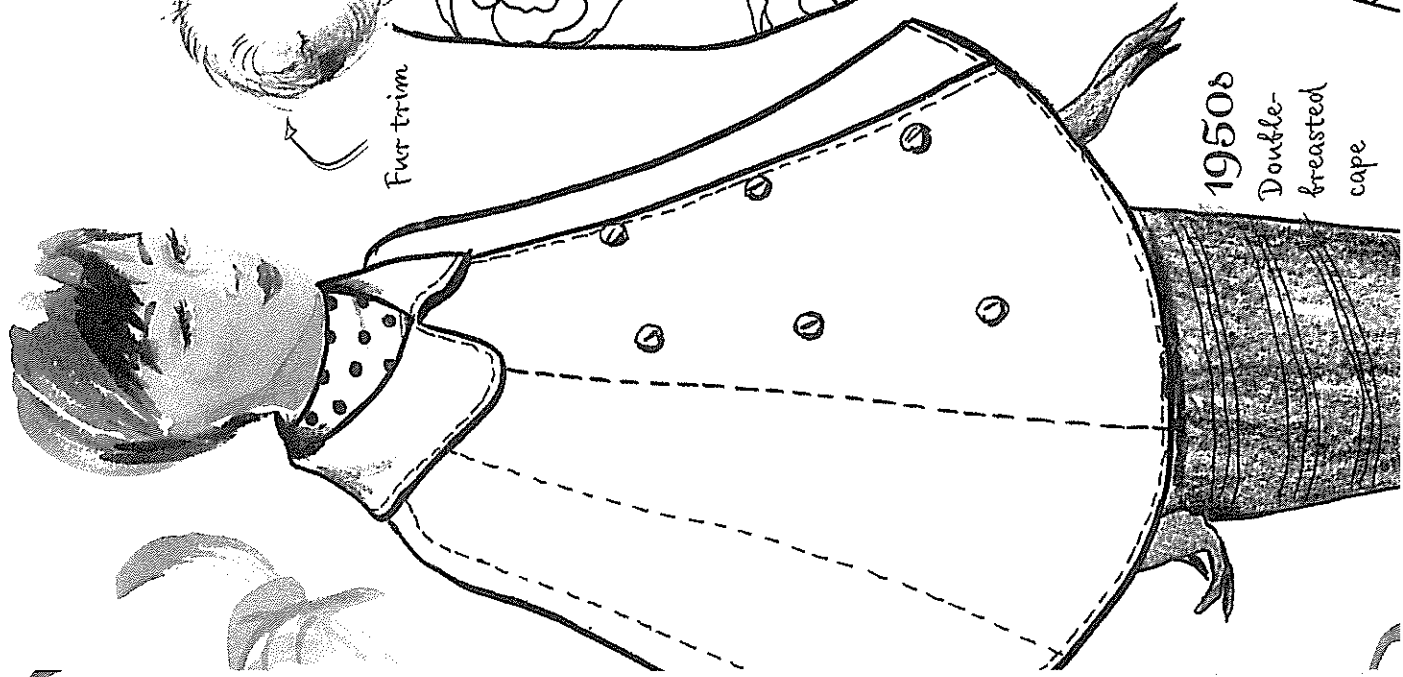


Fur trim

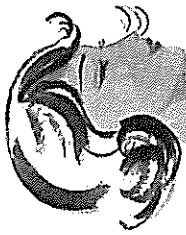


1950s

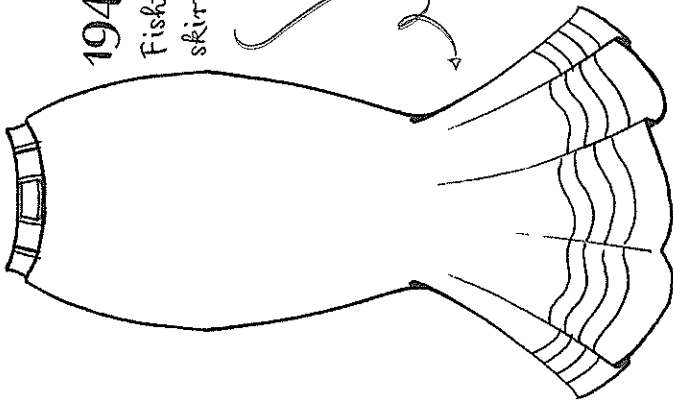
Double-breasted
cape



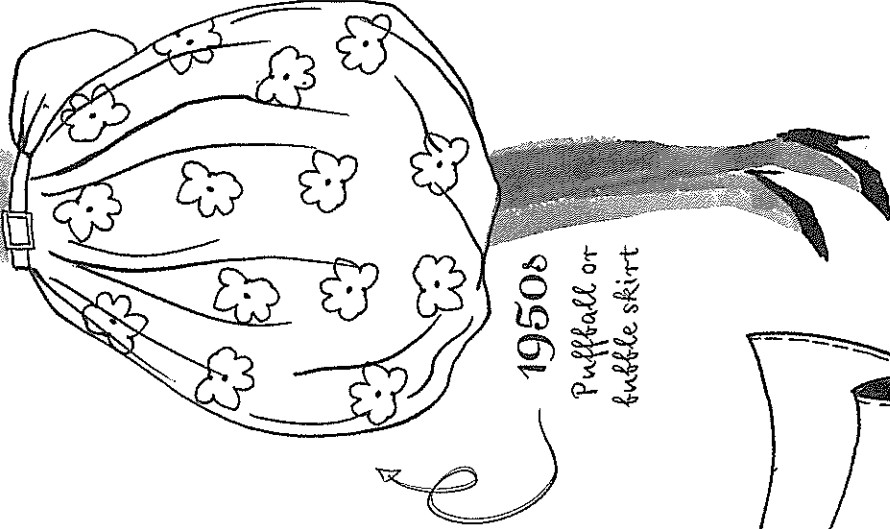
Skirts ✂



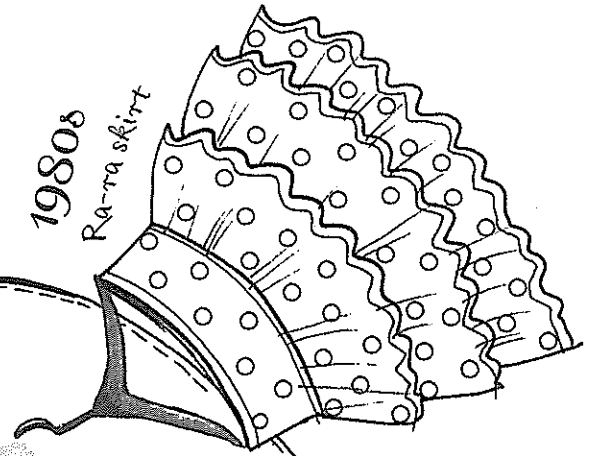
1940s
Fishtail
skirt



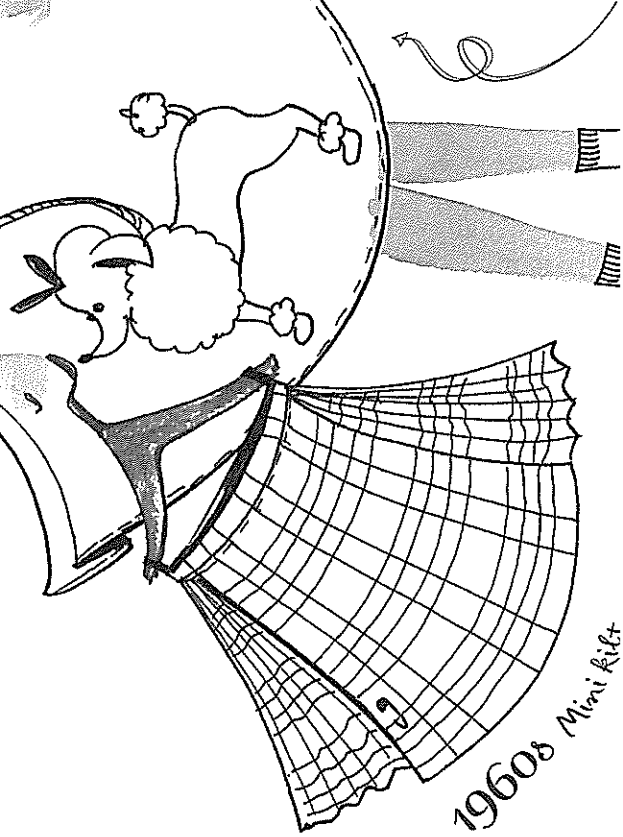
1950s
Puffball or
bubble skirt

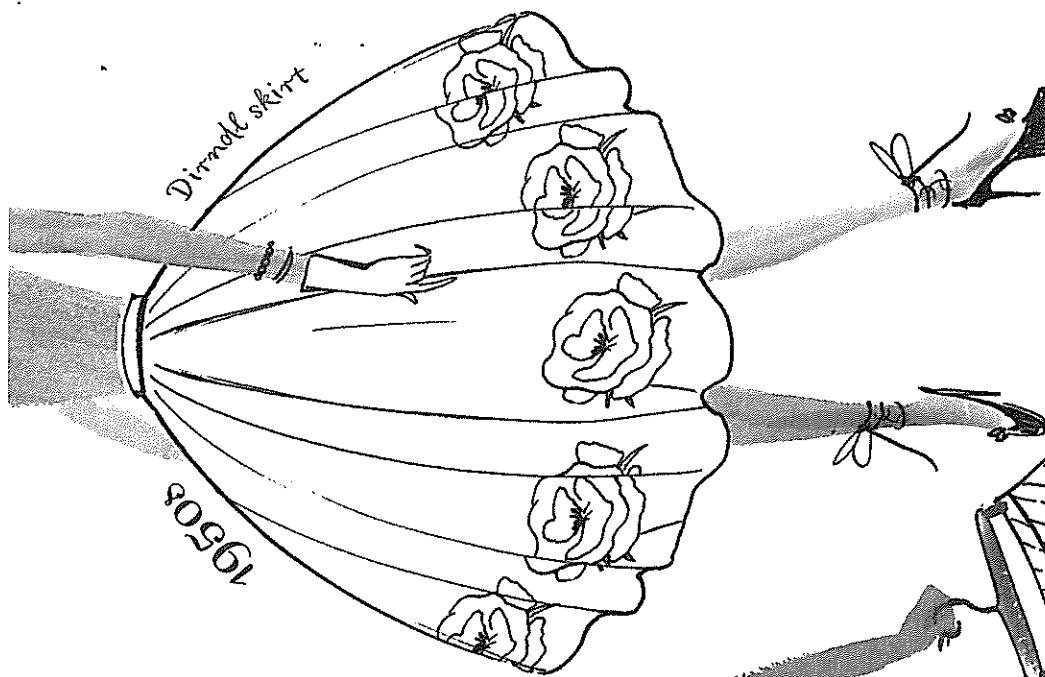


1980s
Ra-ra skirt



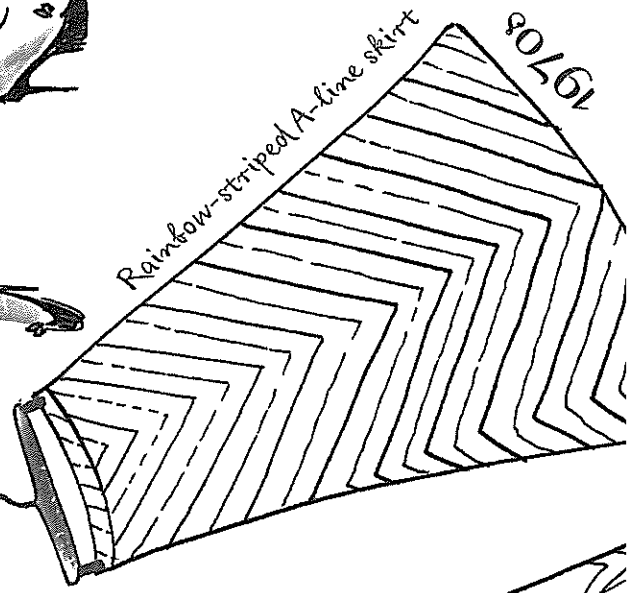
1960s
Mini skirt





Dirndl skirt

1950s



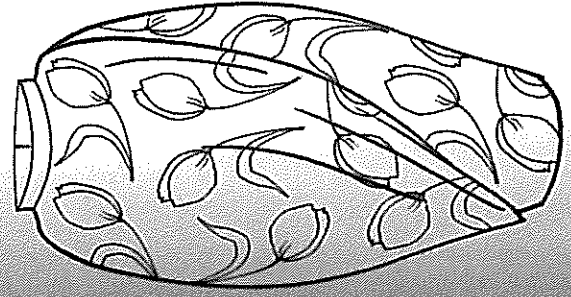
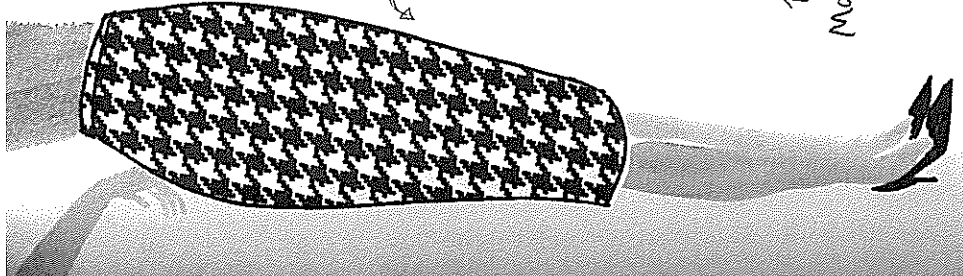
Rainbow-striped A-line skirt

1970s

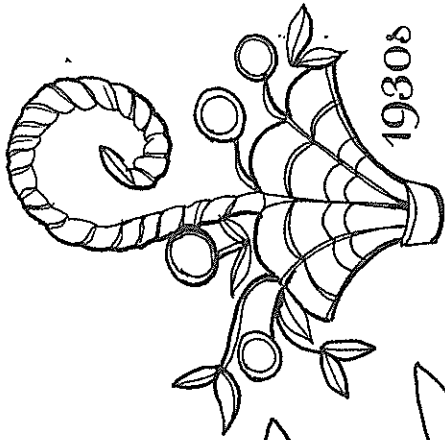


1970s
Maxi skirt

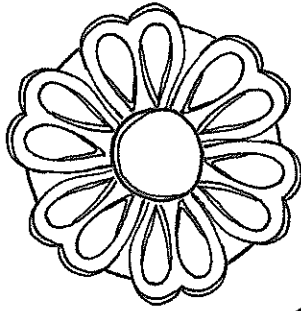
1960s
Dogtooth plaid
pencil skirt



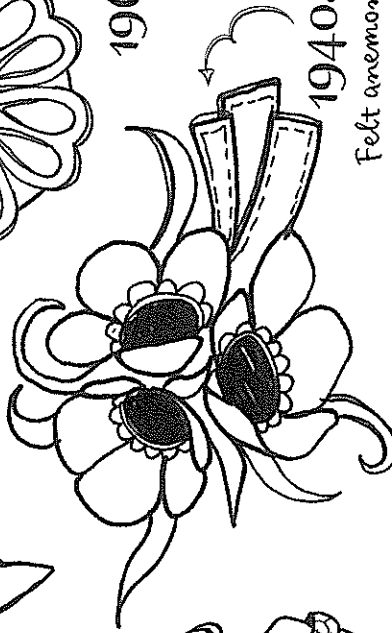
Brooches



1930s

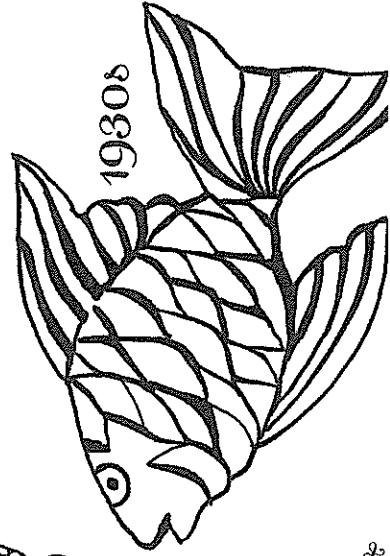


1960s



1940s

Felt anemone
flower corsage

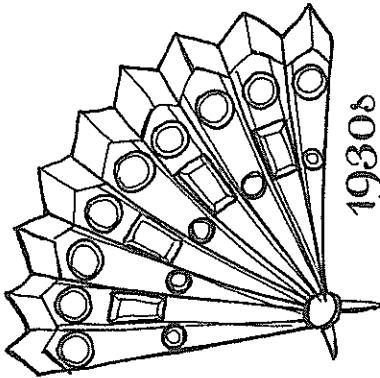


1930s



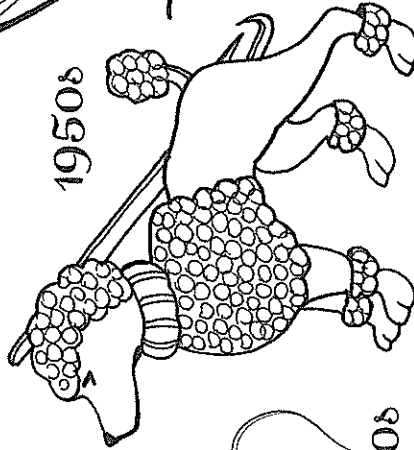
1940s

Bluebird

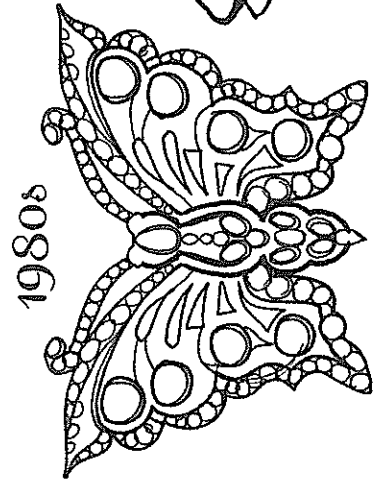


1930s

Art Deco diamanté fan

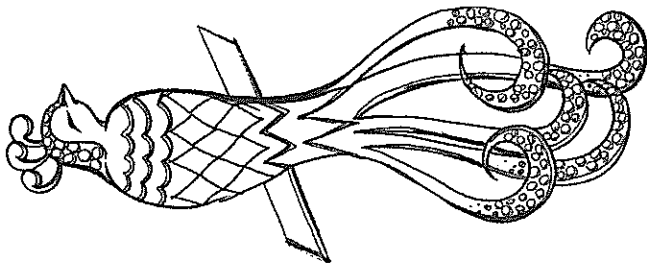


1950s

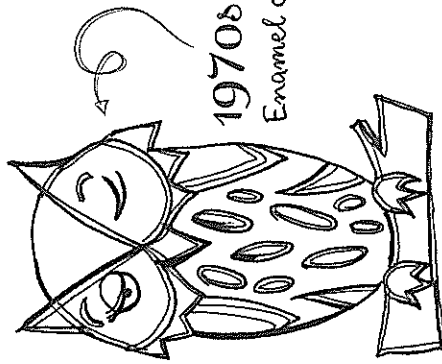


1980s

Osborne Quicklinks

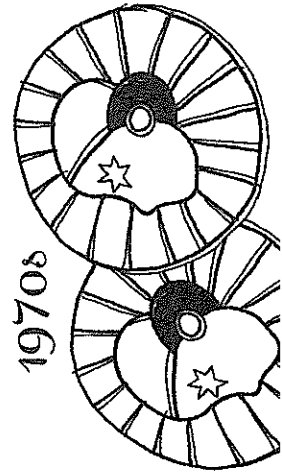


1950s



1970s

Enamel owl



1970s